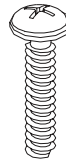
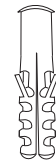


Thank you for purchasing the **Industrial Mesh Wall Mounted Basket**. This page lists all the contents included in the box. Please take time to identify the hardware as well as the individual components of this product. As you unpack and prepare for assembly, place the contents on a carpeted or padded area to protect them from damage.

## wall mounting hardware



2 - bolts



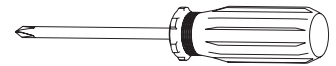
2 - plastic anchors

Missing hardware?

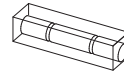
Please call **800.606.6387** for replacements.

## tools required

phillips head screwdriver

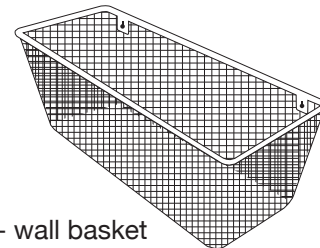


level



(We recommend the use of hand tools instead of power tools)

## components



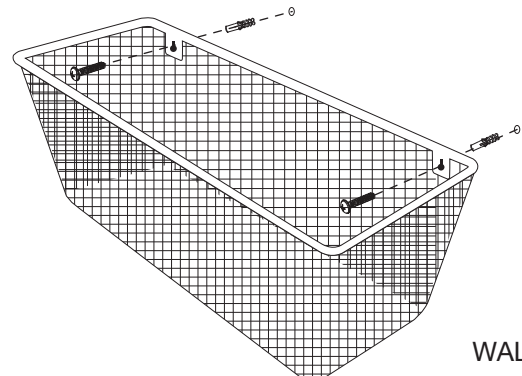
1 - wall basket assembly

## wall mounting assembly

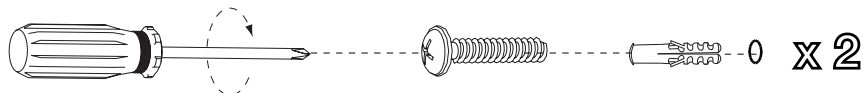
For safe mounting, it is essential to use wall anchors appropriate to your wall type (i.e. plaster, drywall, concrete, etc.). Mount to wood studs whenever possible. The following instructions are for drywall mounting only:

- A. Determine where you wish to hang the **wall basket assembly**. Using a **level**, adjust the wall basket until it is level. Mark on the wall at the 2 hole locations. Make sure all marks are level.
- B. Drill 2 pilot holes into marked positions on the wall and into a wall stud. If the wall stud is not available, drill a hole at each mark slightly smaller than the diameter of the drywall anchor.
- C. Gently tap 2 **plastic anchors** until the flange of each anchor is flush with the wall.
- D. Align holes of **wall basket** with corresponding anchors in wall. Secure 2 **bolts** with a **phillips head screwdriver** into **wall basket** and **plastic anchor**.  
Wall mounting is now complete.

**NOTE: If you are unsure about your wall type or what mounting method you should use, consult a qualified professional or your local hardware store.**



1



## cleaning and care

Clean surfaces with a dry or damp soft cloth. Do not use abrasive cleaners.

**WEIGHT LIMITATIONS:** This item is able to support up to a total of 40lbs evenly distributed.