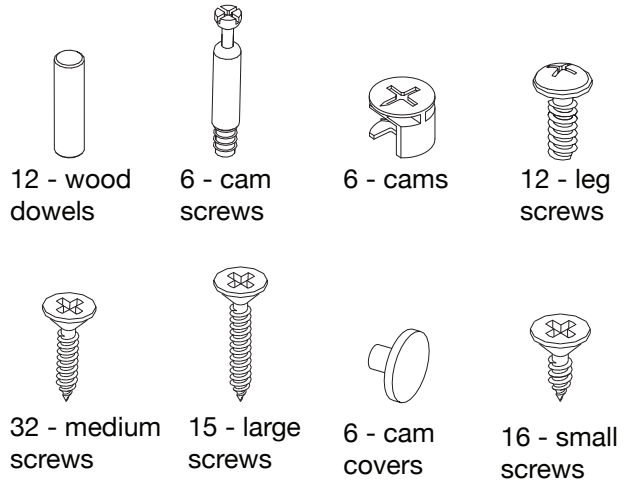
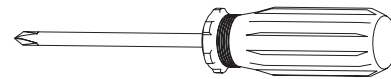


hardware



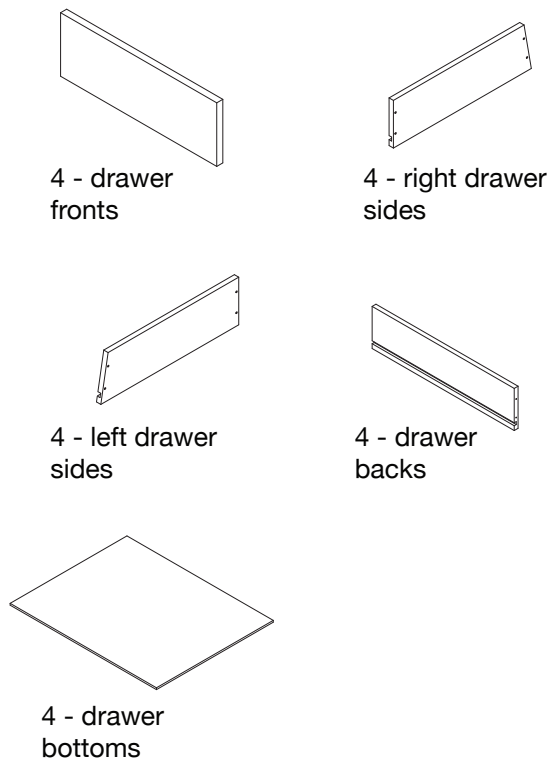
Missing hardware?
Please call **800.606.6387** for replacements.

tools required

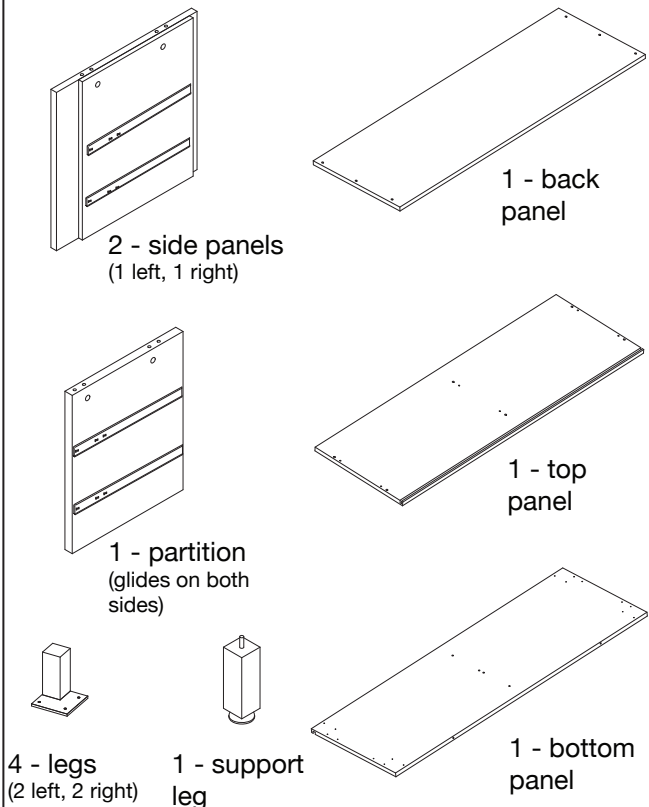


Phillips head screwdriver
(We recommend the use of hand tools instead of power tools)

components - box 1



components - box 2



NOTE: Make sure arrows on each cam points toward nearest edge with holes

1

A
left and right side panels

B
partition

A. Insert 2 **cams** and 4 **wood dowels** into **left and right side panel** as shown. Make sure arrows on each cam points toward nearest edge with holes.
B. Insert 2 **cams** and 4 **wood dowels** into **partition**.

NOTE: Do not over tighten the cam screws

2

Insert 6 **cam screws** into **top panel** as shown. Secure, but do not over tighten, screws with a **Phillips head screwdriver**.

NOTE: Make sure glides pull out away from grooves of top panel and cams are oriented as shown

3

right side panel

partition

left side panel

top panel

With assistance of another adult, fit dowels of **partition** and **left/right side panels** into corresponding holes of **top panel** as shown. Make sure glides pull out away from the grooves on top panel and cams are oriented as shown. Secure all **cams**.

NOTE: Do not over tighten the screws

4

right side panel

back panel

left side panel

Attach **back panel** to assembled unit with 3 **large screws** per side panel as shown. Secure, but do not over tighten the screws with a screwdriver.

5

A left side legs

B support leg

right side legs

bottom panel

A. Attach 4 **left/right legs** to **bottom panel** with 3 **leg screws** per leg as shown. Secure screws with a screwdriver.

B. Attach **support leg** to **bottom panel**. Turn support clockwise to secure.

6

A X 9

B

bottom assembly

NOTE: Do not over tighten the screws

A. With the assistance of another adult, fit dowels and back panel of assembled unit into corresponding groove of bottom assembly as shown. At this point, secure bottom assembly with 9 **large screws** as shown, using a screwdriver.

B. At this point, cover all exposed cams with **cam covers**.

7

drawer left side

drawer front

drawer front assembly

NOTE: Make sure the angled side is towards the drawer front assembly, and grooves on sides and drawer front are aligned.

Attach **drawer left side** to drawer front assembly with 2 **medium screws** and secure using a screwdriver as shown. Make sure the angled side is towards the drawer front assembly, and grooves on sides and drawer front are aligned.

8

drawer bottom

Slide **drawer bottom** into grooves of drawer assembly as shown.

9 Attach **drawer back** with 2 **medium screws** as shown.

10 Attach **drawer right side** to the drawer assembly with 4 **medium screws** as shown. Repeat steps 7-10 for remaining drawer assemblies.

11 Fully extend drawer glides from assembled unit. Position and rest the drawer assembly on top of tabs of drawer glides as shown. Secure each glide to drawer with 2 **small screws** as shown, using a screwdriver. Repeat step 11 for remaining drawer assemblies. Assembly is now complete.

cleaning & care

Clean surfaces with a dry or damp soft cloth. Do not use abrasive cleaners. Do not use furniture wax or polish as the unit is finished with a protective clear lacquer. It is recommended to use coasters to protect surface from heat and water.