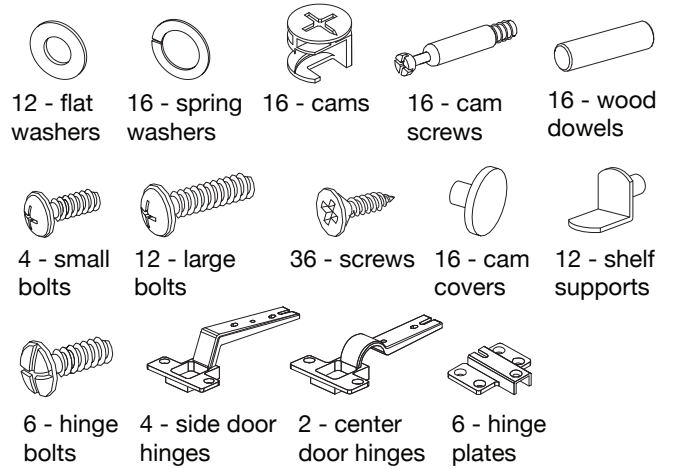
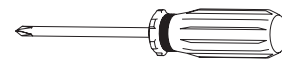


hardware



Missing hardware?
Please call **800.606.6387** for replacements.

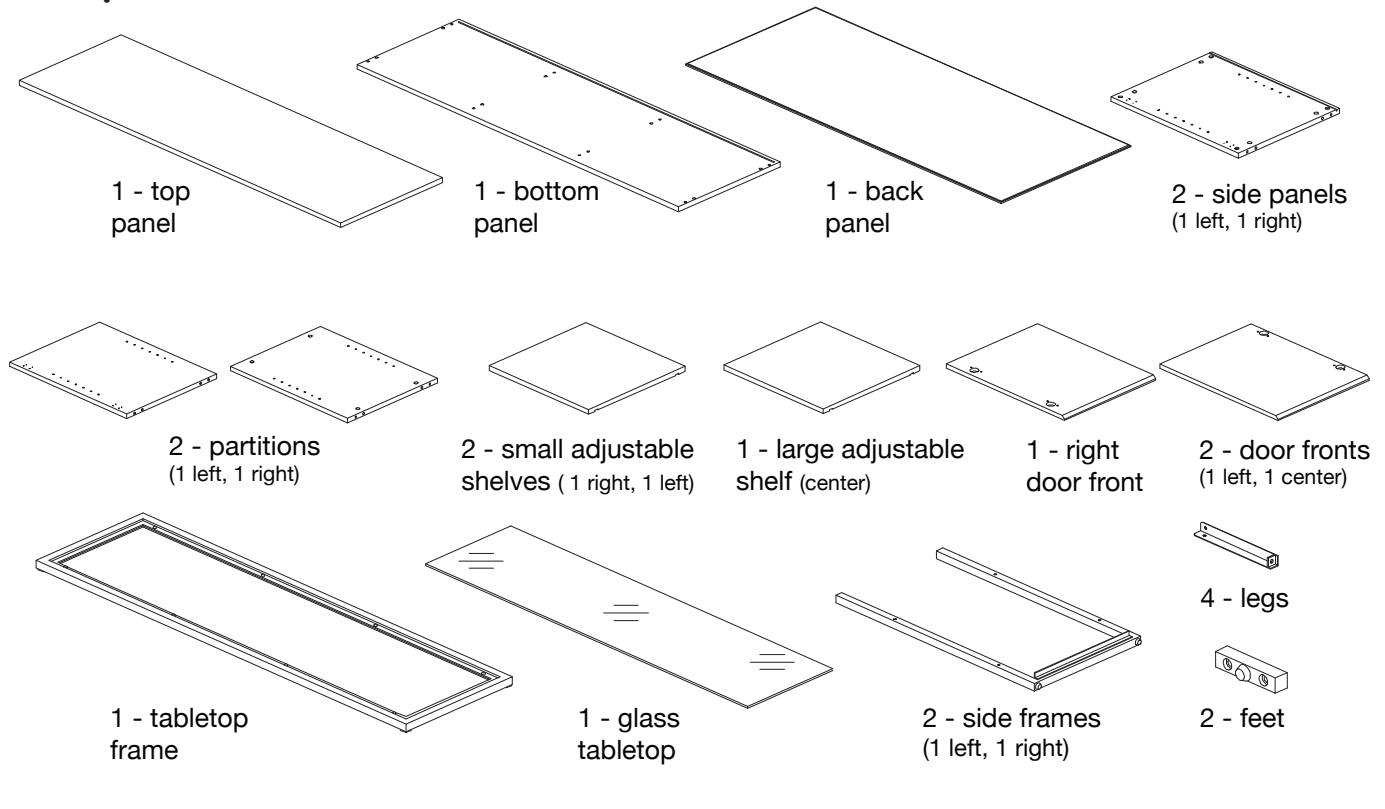
tools required



Phillips head screwdriver

Note: We recommend the use of hand tools instead of power tools.

components



NOTE: Do not over tighten cam screws

top panel

bottom panel

1 Insert 8 **cam screws** and 8 **wood dowels** into **top and bottom panels** as shown. Secure, but do not over tighten, cam screws using a **phillips head screwdriver**.

NOTE: Make sure arrows on each cam points towards nearest edge with holes

left and right side panels x 2

left and right partitions x 2

2 Insert 4 **cams** into **left/right side panels** and **left/right partitions** as shown. Make sure arrows on each cam points toward nearest edge with holes as shown.

NOTE: Make sure grooves on the side panels are on the same side as the bottom panel.

left partition

right partition

left side panel

right side panel

bottom panel

3 Fit dowels of bottom panel into corresponding holes of **left/right side panels** and **left/right partitions** as shown. Make sure grooves on the side panels are on the same side as the bottom panel. With a screwdriver, turn each **cam** clockwise until it securely engages each cam screw.

back panel

4 With the assistance of another adult, slide **back panel** down into grooves of assembled unit as shown.

top panel

A

B

5 A. With the assistance of another adult, fit dowels of **top panel** into corresponding holes of assembled unit as shown. Secure all cams. B. Cover all exposed cams with **cam covers** as shown.

NOTE: Do not over tighten the bolts

left side frame

right side frame

6 With the assistance of another adult, position unit on its back as shown. Attach **left and right side frames** to assembled unit with **2 large bolts, 2 spring washers** and **2 flat washers**. Secure, but do not over tighten, the bolts using a screwdriver.

foot

7 Attach **2 feet** to assembled unit as shown with **2 large bolts, 2 spring washers** and **2 flat washers**. With the assistance of an adult, carefully position assembled unit upright.

leg

tabletop frame

8 Attach **4 legs** to **tabletop frame** as shown. Secure each **leg** with **1 small bolt** and **1 spring washer** using a screwdriver.

9 Fit **legs** into **side frames** of assembled unit as shown. Secure each **leg** with 1 **large bolt**, 1 **spring washer** and 1 **flat washer**.

NOTE: Do not over tighten the screws

10 Attach 6 **hinge plates** to assembled unit with 4 **screws** per plate as shown. Secure, but do not over tighten, the screws using a screwdriver.

11

A. Attach 2 **side hinges** to **left door front** with 2 **screws** per hinge as shown.

B. Attach 2 **center hinges** to **center door front** with 2 **screws** per hinge as shown.

C. Attach 2 **side hinges** to **right door front** with 2 **screws** per hinge as shown.

NOTE: Make sure angled edge is facing up as shown

12

Refer to *Hinge Adjustment* diagram for adjusting the alignment of the door hinges.

Fit **hinges** of **left, center and right doors** into corresponding **hinge plates** in assembled unit as shown. Secure each hinge with 1 **hinge bolt**. At this point cover all exposed **cams** with **cam covers**.

13

A. Insert 12 **shelf supports** at desired shelf heights as shown.

B. Place 2 **small left and right adjustable shelves** and 1 **large center adjustable shelf** onto **shelf supports**. Make sure shelves are securely supported by each shelf support.

14

With the assistance of another adult, carefully place **glass tabletop** onto assembled unit as shown. Assembly is now complete.

hinge adjustments

If the doors do not appear aligned, refer to the instructions below:

- 1) Side to side adjustment:**
Loosen screw **A**, adjust gap with screw **B** and re-tighten screw **A**.
- 2) Depth adjustment:**
Loosen screw **A**, push hinge arm forwards or backwards, re-tighten screw **A** and secure screw **B**.

cleaning & care

Clean surfaces with a dry or damp soft cloth. Do not use abrasive cleaners. Do not use furniture wax or polish as the unit is finished with a protective clear lacquer. It is recommended to use coasters to protect surface from heat and water.